



features & benefits

- Graphic pods show graphics in natural lighting
- Reflecta lightboxes illuminate graphics with backlighting and light diffusing panels.
- Double sided
- Simple to assemble and change graphics
- Protective acetate supplied to protect graphics
- Stable oversize base

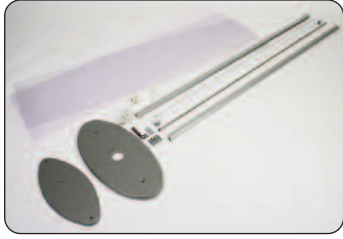


technical information

- Lightboxes use standard 35w & 18w fluorescent tubes
- Recommended graphic material: 200 micron Duratrans or equivalent
- Suitable for indoor use only

Product Size	graphic specifications	additional info
Reflecta graphic Pod - (MR103) H842 x W560 x D280	Please refer to Graphic template	Weight: 5kg
Reflecta graphic Pod - (MR104) H1572 x W560 x D280	Please refer to Graphic template	Weight: 7kg
Reflecta Lightbox - (MR914) H842 x W560 x D280	Please refer to Graphic template	Weight: 10kg
Reflecta Lightbox - (MR915) H1572 x W560 x D280	Please refer to Graphic template	Weight: 12kg

Assembly Instructions

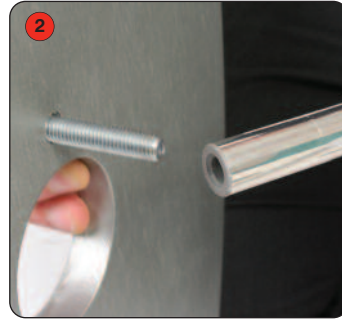


Graphic Pod Kit includes: Base, frame extrusions, top, screws x4, allen key, light defusing panels x2, protective acetate sheets x2

Lightbox kit additions: Lightpole, fluorescent tube & light, power cable, screws x 6, allen keys x2



Lightbox & Graphic Pod: Fix extrusions to base with screws



Lightbox: Fix lightpole mounting to base



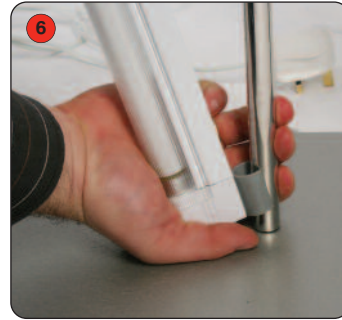
Lightbox & Graphic Pod: Fix extrusions to top with screws



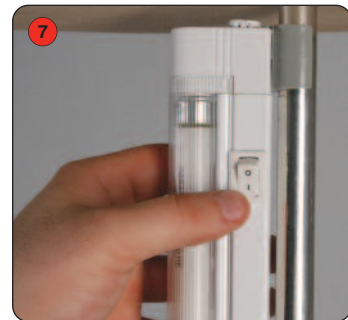
Lightbox: Insert power cable through base



Lightbox: Plug in fluorescent light



Lightbox: Clip light to light pole mounting



Lightbox: Turn on the fluorescent light switch before adding the graphics



Lightbox & Graphic Pod: Insert light defusing panels, graphics, and protective sheets, between the frame extrusions

Important note: If the external flexible cable is damaged it shall be exclusively replaced by the manufacturer or his service agent or similar qualified person.